

National Association for Year-Round Education

Multi-Track Calendars

Sam Pepper

Past Executive Director



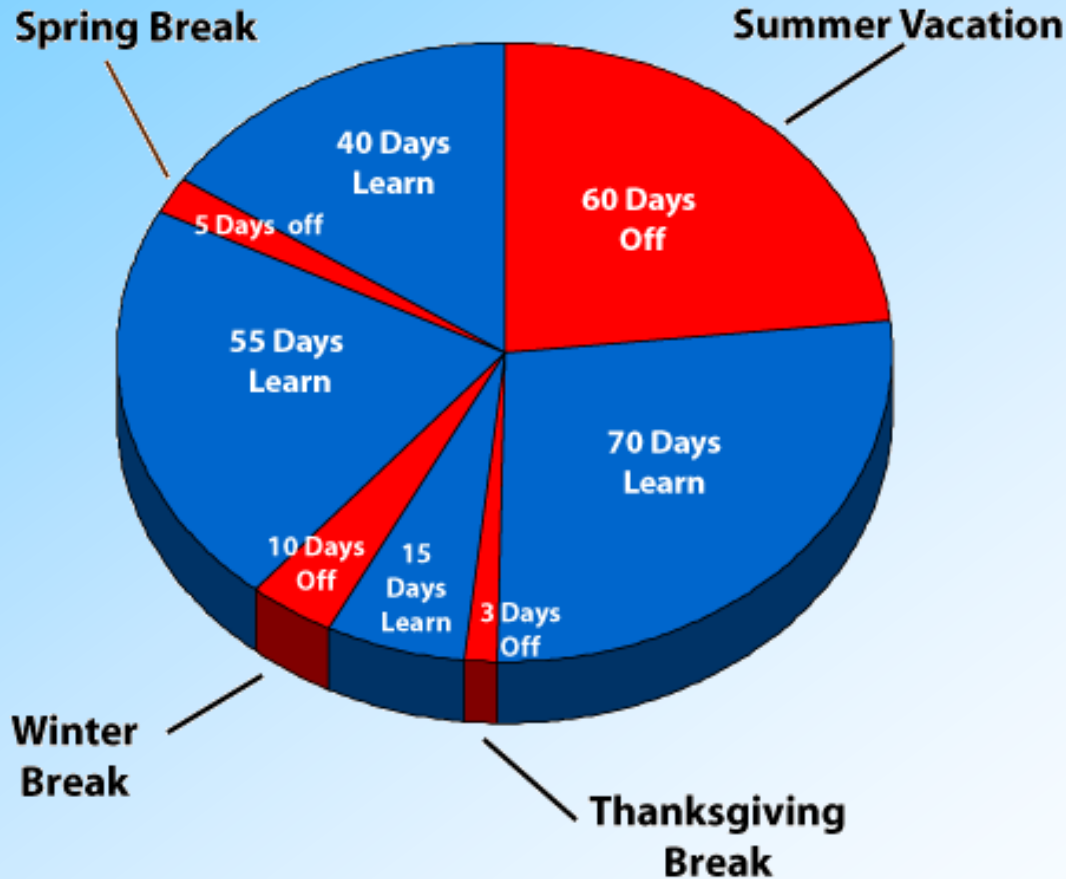
Calendars

National Association for Year-Round Education

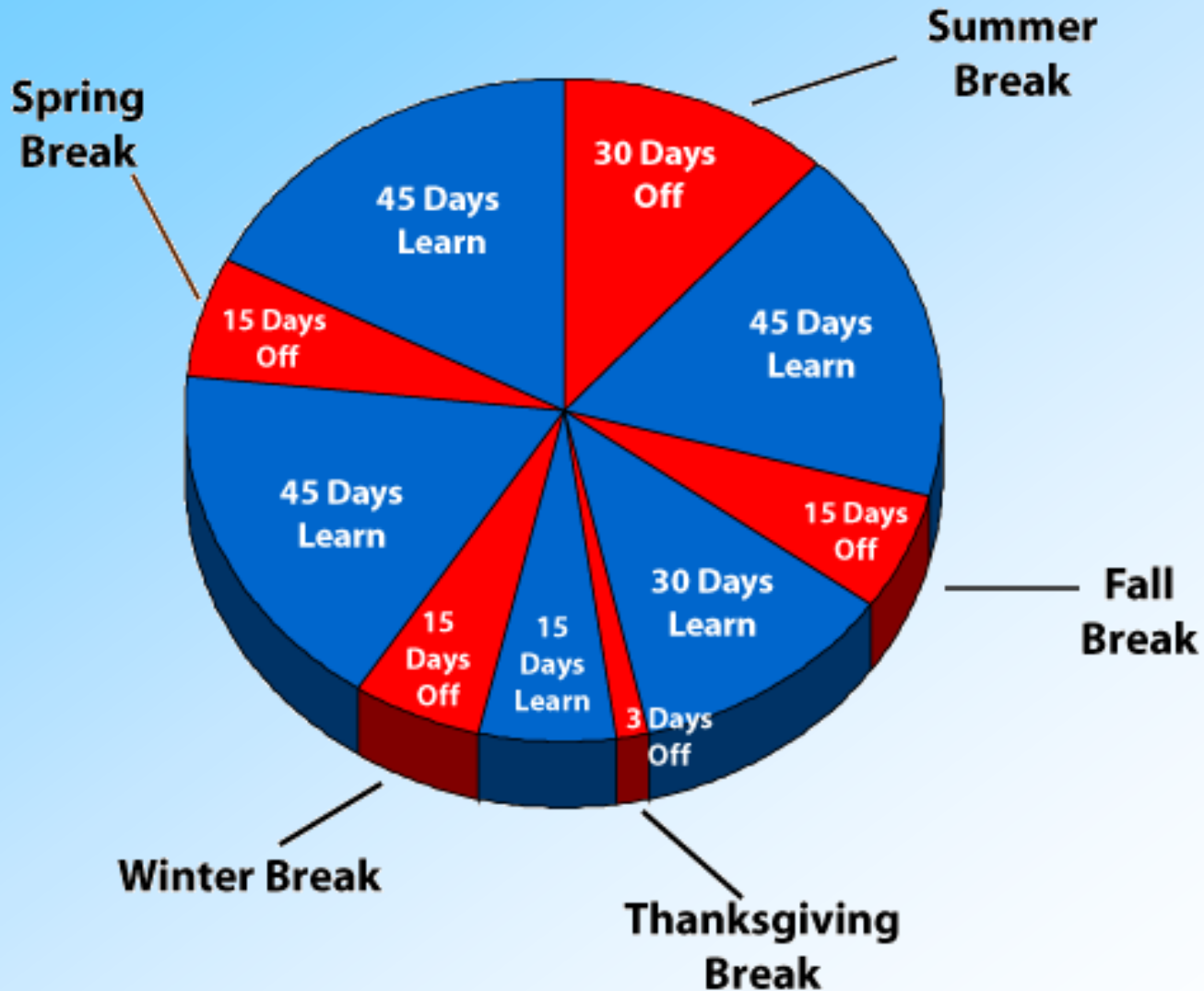


Calendars

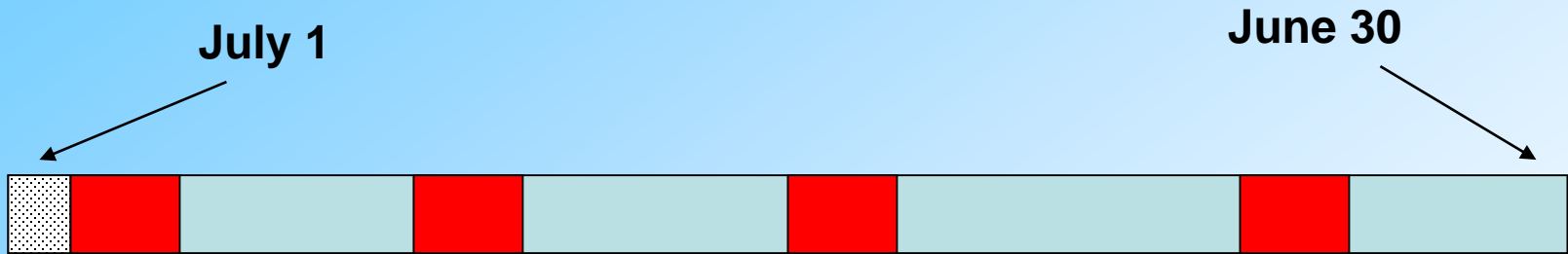
Traditional Calendar



Balanced Calendar



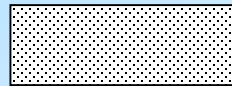
Typical 45-15 Single Track Plan



In Session



Off Track/Vacation



Summer Vacation – All Staff and Students



Multi-Track

National Association for Year-Round Education



Multi-Track

Multi-Track YRE Advantages

- ✿ Increases capacity 33% immediately (4-Tracks)
- ✿ Provides both capital and operating savings
- ✿ Allows day-time instructional hours to be maintained
- ✿ High attendance rates for students
- ✿ Does not strain school's core facilities
- ✿ Fewer teacher substitute days
- ✿ Maximum use of facility for 12 months



Multi-Track

Multi-track is the simple stacking of single track calendar creating a school within a school concept.

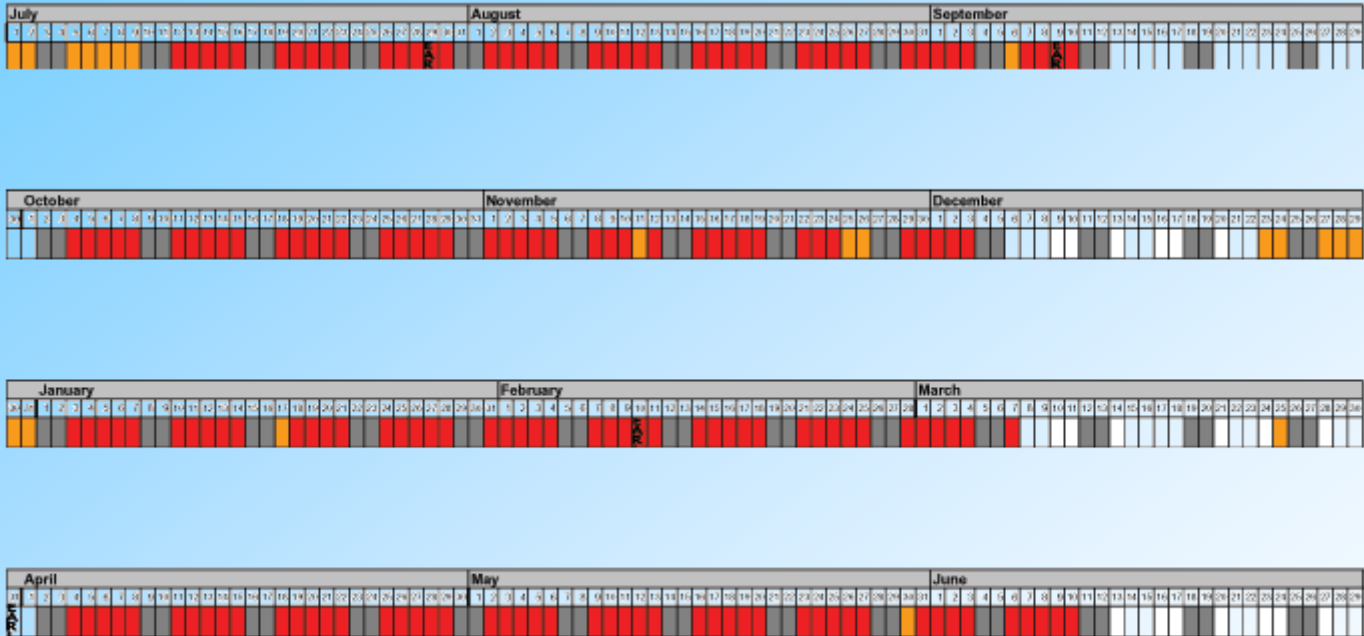
The school operates 12 months out of the year with at least one track on intersession at any given time



Multi-Track

Student Holiday
 Weekend

Track 1



Multi-Track

Student Holiday
 Weekend

Track 1
 Track 2



Multi-Track

Student Holiday
 Weekend

Track 1
 Track 2
 Track 3



Multi-Track

Student Holiday
 Weekend

- Track 1
- Track 2
- Track 3
- Track 4



If the school district must close schools, this adopted 2004-2005 year-round calendar may be amended by the Board of Education to provide additional school days on Saturdays or during vacation to meet legal requirements.



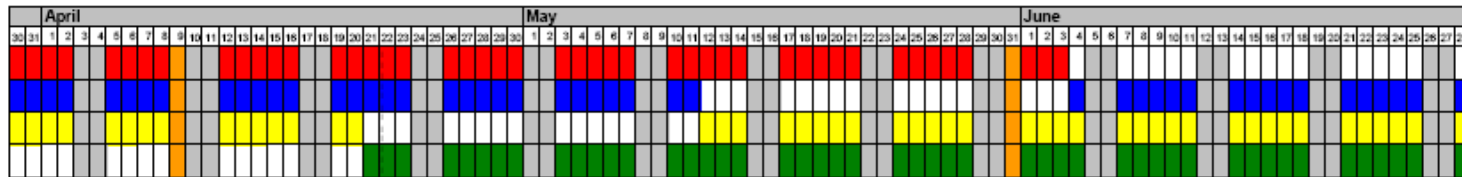
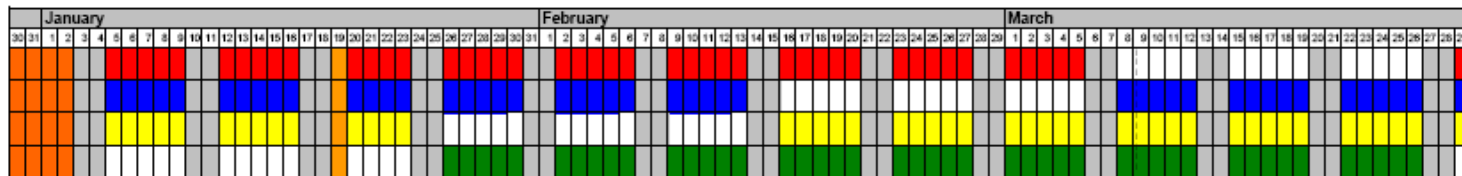
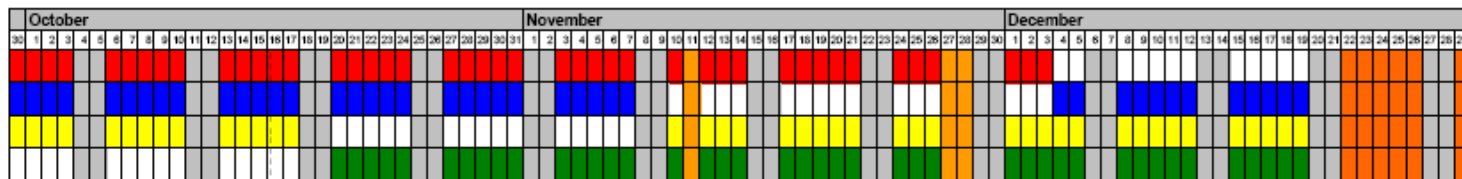
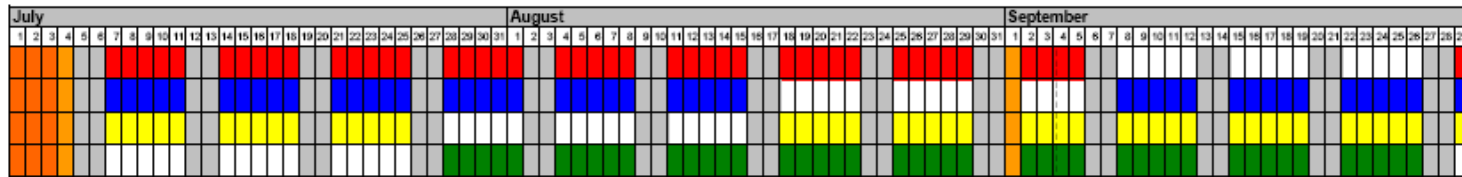
Multi-Track

2003-2004 YEAR-ROUND SCHOOL CALENDAR

WAKE COUNTY PUBLIC SCHOOL SYSTEM

45/15 Multi-Track Schedule

■ TRACK 1
 ■ TRACK 2
 ■ TRACK 3
 ■ TRACK 4
 ■ WEEKEND
 ■ STUDENT HOLIDAY



If the school district must close schools, this adopted 2003-2004 year-round calendar may be amended by the Board of Education to provide additional schools days on Saturdays or during vacation to meet legal requirements.



Multi Track

Options for Overcrowding

- ✿ Bond Issues
- ✿ Double Sessions
- ✿ Extended Day
- ✿ Redrawing boundaries
- ✿ Portables
- ✿ Multi-Track YRE
- ✿ Other Community Facilities



Multi-Track

Overcrowding

School Capacity of 600

With Multi-Track Year-Round Education (MTYRE)

Four tracks of 200 students

Three Tracks in Session , One Out of Session

Expands Capacity to 800 Students

Only 600 Students in School at any Given Time

Expands School Capacity by 33%



Multi-Track

Four Tracks (45-15, 60-20)

School Capacity **900**

Need to Enroll **1,200**

- Students divided into four tracks – 300 students per track
- Three tracks always in session – 900 students (capacity)
- One track always on vacation – 300 students (growth)

Capacity Equation

$$\frac{300 \text{ (Vacation)}}{900 \text{ (Capacity)}} = 33\% \text{ capacity gain}$$



Multi-Track

Savings

- ★ Capital outlay
- ★ Operating costs for administrative and support staff (full-year contract vs. hiring additional staff)
- ★ Utility Costs – adding two months vs. nine months year at a new school.
- ★ Economies of scale
- ★ Reduced absenteeism -- staff and students
- ★ Salaried administrators in charge of summer school
- ★ Reductions in numbers of textbooks and desks
- ★ Reduced lease costs -- portables



Principal Salaries

Multi-Track



Traditional School 1

\$90,000



Traditional School 2

\$90,000



Traditional School 3

\$90,000



Traditional School 4

\$90,000



Principal Salaries

Multi-Track



Traditional School 1

\$90,000



Traditional School 2

\$90,000



Traditional School 3

\$90,000



Traditional School 4

\$90,000



Multi-Track School 1

\$110,000



Multi-Track School 2

\$110,000



Multi-Track School 3

\$110,000

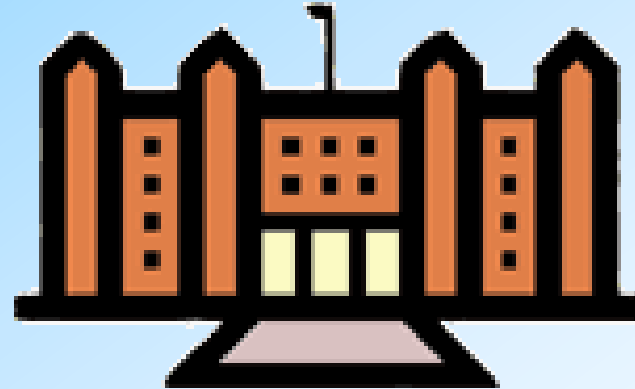
Principal Salaries



Total Principal Salaries
4 Traditional Schools

\$360,000

Multi-Track



Total Principal Salaries
3 Multi-Track Schools

\$330,000

National Association for Year-Round Education



National Association for Year-Round Education

